

Rates
2025



Package *Guide*

KindeRdam and Peuter&Co

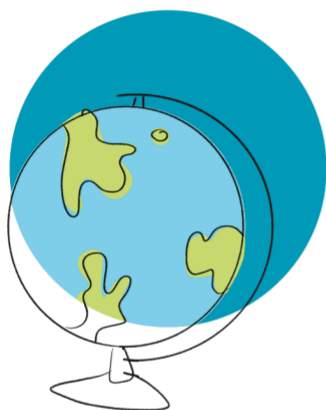
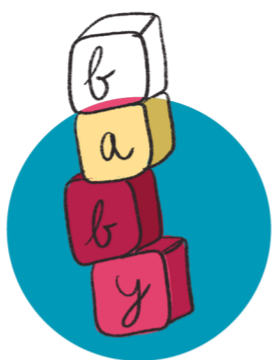
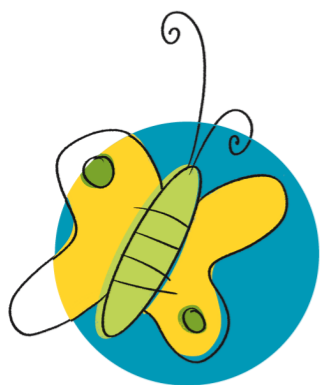


Table of Contents

1. Introduction
2. Daycare
3. Toddler Care
4. Out-of-School Care
5. Holiday Care without After-School Care
6. Exchange Service
7. Holiday Weeks and Closing Dates
8. Calculation of child care times BSO
9. Parent Contribution, Costs and Invoice

KindeRdam 

onderdeel van **Groot** ROTTERDAM

De Rotterdamse
Peuterschool





1. Introduction

In this PackageGuide you will find everything about our different childcare packages and the associated rates. All our BSO and daycare packages include:

- nappies, lunch, healthy snacks, daily fruit, drinks,
- outings,
- preschool education for two to four year olds,
- play and craft materials,
- workshops,
- care during pre-announced school closure days (if you have entered into an agreement for that particular weekday)
- BSO holiday destination during the school holidays.

How much will I be paying for the childcare?

- How much you'll pay for childcare will depend on the number of days or hours you need childcare and the location you opt for.
- The rates quoted in this PackageGuide are gross prices. Are you entitled to a childcare allowance? Then you'll be entitled to a refund for part of the costs from the Tax Authorities. You can calculate your own contribution on www.toeslagen.nl/proefberekening.
- You can also find more information about the childcare allowance on our website.

Some locations have a different PackageGuide

This PackageGuide applies to most KindeRdam and Peuter&Co locations. Different packages and rates apply to our 6 Rotterdam Center locations. The same also applies to our Spikkels location in Hoogvliet. We have a separate PackageGuide for these locations.

Do you have any questions, or would you like to get in touch with the Klantadvies & Planning (Customer Advice & Planning department)?

Out-of-School Care (BSO) KindeRdam: klantadvies@kinderdam.nl or 010 - 44 300 36

Daycare (KDV) KindeRdam: klantadvies@kinderdam.nl or 010 - 44 300 36

Toddler Care KindeRdam: klantcontact@kinderdam.nl or 010 - 44 300 36

Toddler Care Peuter&Co: plaatsing@peuterenco.nl or 010 - 42 553 92



2. Daycare (KDV)

Opening hours

Our daycare centres are open from 07:30 to 18:00 as standard. We offer extended care in the morning and/or afternoon at some of our locations. You can find the opening hours for your child's location, or your preferred location, via the [locatiepagina](#) on our website.

52 week package

€ 10.71 per hour

Childcare throughout the entire calendar year, with the exception of public holidays and KindeRdam's annual study day. This is our standard package, at the lowest hourly rate.

- **Please note:** we don't issue refunds if you cancel any sessions.

48 week package

€ 11.04 per hour

This package offers 48 weeks of childcare per calendar year, with the exception of public holidays and KindeRdam's annual study day. If you start or stop this care package during the calendar year, the 4 weeks to be cancelled will be calculated on a pro rata basis. We will also provide you with a final statement per calendar year. We will send out an additional assessment if there are too few cancelled hours.

- **Please note:** you will need to cancel your child's sessions in the OuderApp(ParentApp) at least 4 weeks before your holiday. Have you not done so on time? Then the cancelled days will not be deducted from the weeks to be cancelled.

40 week package

€ 12.62 per hour

Childcare for 40 weeks per calendar year. No childcare during the holiday weeks set by KindeRdam, public holidays and KindeRdam's annual study day.

Flexible childcare or half-day childcare

We offer the possibility of flexible childcare or half-day childcare on Wednesdays and/or Fridays at some of our locations. Would you like to know whether there are options for this type of childcare at your desired location? Then send an email to the Klantadvies & Planning (Customer Advice & Planning) department: klantadvies@kinderdam.nl.

Extra day(part)

The purchase of an extra day (only per day(part), not per hour) will be invoiced separately. The approval of a request for an extra day(part) will depend on the group's occupancy level, whereby the legally required professional-child ratio (BKR) will be prevailing. This unfortunately means it won't always be possible to realise your request. Do you not need the extra day after all? Then you can cancel this up to 48 hours in advance. We will charge you for the day (or part of the day) if you cancel within 48 hours of the start of this extra day (or part of the day).



3. Toddler Care

Opening days, opening hours and closing days

The opening times can differ per toddler playgroup. You can find details of this on the KindeRdam.nl or derotterdamsepeuterschool.nl website's location page for the relevant toddler playgroup.

Besides official holidays and KindeRdam's and Peuter&Co's study day, the toddler playgroups are also closed during the holiday weeks set by KindeRdam and Peuter&Co. Some toddler playgroups are closed on school closing days, which are listed in the school guide. You can enquire about these at the location. You won't be eligible for a refund for days when the toddler playgroup is closed.

Toddler Care

€ 10.71 per hour

Toddler care during school weeks.

Difference per municipality

The toddler care policy will be determined per municipality. Do you have a VVE (Early Childhood Education) indication, a CJG (Youth & Family Center) form, or a form for Extra Playing and Learning? Then your child can go to toddler care for extra day parts. Please email the Klantadvies & Planning (Customer Advice & Planning) department for details per location: klantcontact@kinderdam.nl or plaatsing@peuterenco.nl.



4. Out-of-School Care (BSO)

After-School Care (NSO)

NSO opening hours

We refer to the care children receive after school hours and during school weeks as After-School Care (NSO). This care is often also referred to as out-of-school care. Our BSO locations are open from the end of the school day until 18:30 as standard. Some of our locations also offer Pre-School Care (VSO) and/or extended care in the afternoon. You can find the opening hours for your child's location, or your preferred location, via the [locatiepagina](#) on our website.

52 week package

€ 9.52 per hour

Childcare throughout the entire calendar year, also including the holiday weeks set by KinderDAM and any pre-announced school closing days (if you have concluded an agreement for that particular weekday). There will be no childcare on public holidays and on KinderDAM's annual study day.

- **Please note:** this package will register your child for childcare as standard on the contractually agreed childcare day during the set holiday weeks. Does your child not need childcare during the holiday on that/those day(s)? Then we'd like to ask you to **cancel your child's childcare via the OuderApp 4 weeks before the start of the holiday.**

48 week package

€ 10.26 per hour

Childcare for 48 weeks per calendar year (including 8 weeks of holiday childcare) and on the pre-announced school closing days (if you have concluded an agreement for that particular weekday). The 8 holiday weeks will be calculated on a pro rata basis if you start or stop this childcare package at some point during the calendar year. This may result in an additional charge.

- **Please note:** this package will not register your child for childcare as standard on the contractually agreed childcare day during the set holiday weeks. You will need to register (confirm) or cancel (withdraw) your child for an upcoming holiday in the OuderApp at least 4 weeks before each holiday. Have you not done so on time? Then your child will automatically be cancelled for the holiday weeks. You will then not be able to use childcare during the holiday. Are you still in need of childcare? Then you can request an extra holiday day at an extra charge.

40 week package

€ 11.18 per hour

Childcare for 40 weeks per calendar year, including on the pre-announced school closure days (if you have concluded an agreement for that particular weekday). You will therefore not have access to childcare during the holiday weeks set by KinderDAM.

Flexible Childcare

We offer flexible childcare at some of our locations. Would you like to know whether there are options for this type of childcare at your desired location? Then send an email to the Klantadvies & Planning (Customer Advice & Planning) department: klantadvies@kinderdam.nl.

Extra day(part)

Any extra days taken (only per day(part), not by the hour) will be invoiced separately. The approval of a request for an extra day(part) will depend on the group's occupancy level, whereby the legally required professional-child ratio (BKR) will be prevailing. This unfortunately means it won't always be possible to realise your request. Do you not need the extra day after all? Then you can cancel this up to 48 hours in advance. We will charge you for the day (or part of the day) if you cancel within 48 hours of the start of this extra day (or part of the day).

Pre-School Care (VSO)

VSO

€ 9.52 per hour

Pre-School Care during the school weeks and on the pre-announced school closing days (if you have concluded an agreement for that particular weekday). You will therefore not have access to childcare during the holiday weeks set by KindeRdam.



5. Holiday Childcare without NSO

12 week holiday package

€ 9.52 per hour

You can purchase this holiday package for a minimum of 1 year, from the start date of the contract and for a minimum of 2 fixed days per week. You will have access to 12 weeks of childcare during the holiday weeks set by KindeRdam. This package does not offer childcare during school closing days.

What is a school closing day?

Schools may, at times, extend a holiday with an extra day(part) or extra days (either at the beginning or end). If this day (or days) falls (or fall) outside of the holiday weeks mentioned in this PackageGuide, this will be a school closing day and not a holiday.



6.Exchange Service

Children attend daycare or out-of-school care on their fixed days. This is important for the stability of the groups, the emotional safety of the children and therefore also for the pedagogical quality of the care being provided.

If you're unable to take up a day of childcare, we offer the option of using this childcare day at another time.

- **Please note: this is a service, no rights can be derived from this.** That's because the exchange depends on the group's occupancy level, whereby the legally required professional-child ratio (BKR) is prevailing. This means that your request for (extra) childcare is unfortunately, not always achievable. No extra employee(s) will be used to facilitate extra childcare.

Exchanges are not possible at the toddler group. We apply the rules for exchanging KDV and BSO days, which provides us with a better overview of occupancy levels. By cancelling your child in time, you help us and create more room for exchange.

The rules

- You will receive exchange hours for a specific cancelled day. This will only apply if the cancellation was processed in Konnect (the Parent Portal/OuderApp) at least 7 days (24 hour) before the cancelled day.

For example: you want to cancel your child's session on Friday 27 June, whereby the planned childcare on that day was due to start at 7:30. Have you cancelled your child's childcare before 7:30 on Friday 20 June? Then you will receive exchange hours for this cancellation. Are you cancelling less than 7 (24 hour) days in advance? Then you won't receive any exchange hours.

- **Please note:** a 48-week KDV package will allow you to accrue exchange hours if you cancel your child's childcare during the period from 28 days to 7 days before the cancelled day.
- By cancelling days, you can accrue exchange hours up to a maximum of 42 hours per calendar year per child. At the time when the maximum of 42 hours has not yet been reached, each cancelled day, as per the above condition, will be topped up. No exchange hours are accrued for this if a day is cancelled while the maximum of 42 hours has been reached. Exchange hours will only be supplemented when the maximum of 42 hours has not yet been reached.
- The maximum number of exchange hours of 42 hours applies to both daycare and out-of-school care.
 - Pre-school care: we work with a maximum of 6 hours per calendar year for the cancellation of pre-school childcare hours.
- A cancelled day can be used between 28 days before the cancelled day until the end of the calendar year.
- The number of accrued hours can be used for any product. For example, a cancelled BSO day can also be used as an after-school care day or school closing day.

- No exchange hours will be accrued for the cancellation of school closing days, KindeRdam study days and public holidays.
- Cancelled hours which haven't or can't be used will automatically expire at the end of the agreement, or at the end of the current calendar year.
- Any accrued exchange hours will expire as soon as a child switches to a different type of childcare. You will start accruing the exchange hours again once your child has switched from daycare to after-school care.
- Exchange hours are linked to individual children and therefore can't be transferred to another child.
- The use of exchange hours is only possible within your child's own group.
- Exchange hours which have been approved and subsequently cancelled on time, in accordance with the above conditions, will be topped up again. This will **only** apply if the cancellation was processed in Konnect at least 7 days (of 24 hours) *before* the cancelled day.



7. Holiday Weeks and Closing Dates

Please see details of the official school holidays below. The toddler playgroups are closed during the holiday weeks set by KindeRdam and Peuter&Co and on any possible school closing days specified by the school in the school guide. You can enquire about this at your location.

No money will be refunded for the public holidays listed below. You will not be able to exchange these days either.

Holiday weeks in 2025

Christmas holidays:	2 January to 3 January	Summer holidays:	21 July to 29 August
Spring holidays:	24 February to 28 February	Autumn holidays:	20 October to 24 October
Easter holidays*:	28 April to 9 May	Christmas holidays:	22 December to 31 December

* **Please note:** the Easter holidays are made up of 1 week set by the government and 1 week set by KindeRdam and Peuter&Co. We have opted for this, as most of the schools KindeRdam and Peuter&Co working with have 2 weeks Easter holidays. Does your school have a different holiday schedule? Then please contact our Klantadvies & Planning (Customer Advice & Planning department):

klantadvies@kinderdam.nl.

Public Holidays and Study Day in 2025

New Year's Day:	Wednesday 1 January
Easter Monday:	Monday 21 April
Liberation Day:	Monday 5 May
Ascension Day:	Thursday 29 May
Whit Monday:	Monday 9 June
Christmas Day:	Thursday 25 December
Boxing Day:	Friday 26 December
New Year's Eve*:	Wednesday 31 December, from 17:00
Study Day*:	Wednesday 17 September

* Reimbursement of childcare hours will be automatically refunded afterwards (at the end of the month).



8. Calculation of child care times BSO

The BSO starting time is set per school/per group every calendar year. KindeRdam regularly checks in with the schools to find out whether the starting times may have changed. We will subsequently incorporate any changes in times in our systems, which will allow us to calculate the new starting times.

Continuous schedule or exchange of short/long days

If a school switches to a continuous schedule at the beginning of a school year or during a school year, or exchanges short/long days, the BSO starting time will change too. In that case, we will change the hours on your invoice from the beginning of the changed school times.

Changed school finishing time

If a school changes its finishing time at the start of the school year or during a school year, for example fifteen minutes earlier or later, we will change the hours on your invoice from the beginning of the changed school times.

School closing days

School closing days are calculated in the annual hours of after-school care (NSO). An average per day is subsequently calculated from this. You will only pay for the right to a school closing day if you have entered into an agreement for that specific weekday.



9. Parent Contribution, Costs and Invoice

A lower or no parent contribution in the City of Rotterdam

The City of Rotterdam believes it's important for all children in the city aged 2 to 4 years to enjoy the opportunity to develop to the best of their ability. Some children are therefore allowed some extra Playing and Learning time. Only children who have received this referral from the CJG (Youth and Family Centre) are eligible for the extra time. KindeRdam and Peuter&Co have agreed with the City of Rotterdam that we will give priority to children with an extra Playing and Learning indication. Please email the Klantadvies & Planning (Customer Advice & Planning) department for the details:

klantcontact@kinderdam.nl or plaatsing@peuterenco.nl.

Difference per municipality

The toddler care policy will be determined per municipality. Do you have a VVE (Early Childhood Education) indication, a CJG (Youth & Family Center) form, or a form for Extra Playing and Learning? Then your child can go to toddler care for extra day parts. Please email the Klantadvies & Planning (Customer Advice & Planning) department for details per location: klantcontact@kinderdam.nl or plaatsing@peuterenco.nl.

Do you use debt counselling services?

Then the Municipality of Rotterdam can offer free childcare or childcare for a lower parental contribution, depending on your personal situation. This only applies to parents who demonstrably make use of debt rescheduling based on the Wet gemeentelijke schuldhulpverlening (Municipal Debt Counselling Act) or the Wet schuldsanering natuurlijke personen (Natural Persons Debt Rescheduling Act).

Calculate your net costs on toeslagen.nl

Our hourly rates are gross: in most cases parents will receive some of this back via their childcare allowance. You can make a trial calculation of your net costs on toeslagen.nl/proefberekening. Or download the app via toeslagen.nl.

KindeRdam and Peuter&Co Invoicing

We send out our invoices around the 15th of the month.

- Do you have a VCO (PSC) or 40 week package? Then you'll receive the same invoice every month: 1/12 part of the annual amount. It's not possible to temporarily cancel the months of July and August.
- Do you have a 48 week package, a 52 week package or a 12 week holiday package? Then you'll receive the same invoice every month: 1/12 part of the annual amount.
- Will your child be attending toddler care? Then your annual costs will be invoiced in 10 or 12 monthly instalments. It's not possible to temporarily cancel the months of July and August.



10.Disclaimer

The contents of this PackageGuide have been compiled with the greatest of care. KindeRdam and Peuter&Co expressly precludes any liability for inaccuracies and incompleteness. KindeRdam and Peuter&Co reserves the right to make exceptions to the rules in this PackageGuide in very specific situations, when unforeseen cases and situations arise.